

## Events 2016

**Jan 2<sup>nd</sup>**

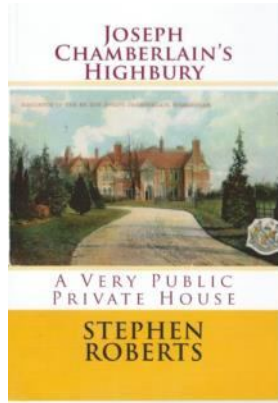
Wildlife Walk with Paul Anthony.  
10.30am – 12.30pm

**Feb 13<sup>th</sup>**

Wildlife Walk with Paul Anthony  
10.30am – 12.30pm

**March 15<sup>th</sup>**

Joseph Chamberlain's Highbury.  
A talk by Stephen Roberts  
Moseley CDT.  
7pm- 8.30pm



**March 19<sup>th</sup>**

Wildlife Walk with Paul Anthony.  
10.30am – 12.30pm

**April 2<sup>nd</sup>**

Pond Dipping with Ellen Pisolkar.  
10.30am – 12.30pm

### **\* *Bulletin editor needed* \***

HPF relies on volunteers to keep going, and we are often pressed for time. We'd really appreciate some help with writing, compiling and editing the bulletins. If you're interested please contact us as below.

**May 10<sup>th</sup>**

HPF AGM. Moseley CDT.  
7pm – 9.00pm

**May 28<sup>th</sup>**

Wild Flower Walk with Tony Sames.  
10.30am – 12.30pm

**June 11<sup>th</sup>**

Meet the beekeepers. 2pm

**August**

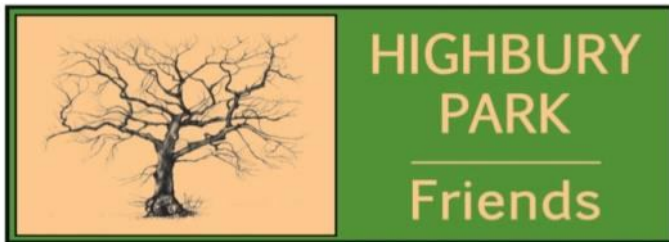
Bat walk led by Brumbats.  
Details to follow

**For all events, apart from the AGM and evening talk, meet in Highbury Park Car Park. Events are free of charge and open to everyone**

For events in the park please wear suitable footwear for walking over uneven ground

Highbury Park Friends  
c/o York Supplies  
55-57 Balaclava Road  
Kings Heath  
Birmingham B14 7SD

[webadmin@highburyparkfriends.org.uk](mailto:webadmin@highburyparkfriends.org.uk)



## *HPF Bulletin January 2016*

### **Highbury Hedgerows**

Hedgerows are linear wooded areas and have marked the English landscape for many centuries. In modern times they provide access and mobility to many creatures.

The newly planted hedges at Highbury include Hawthorn, Hazel, Apple, Rowan, Guelder Rose, Elder and Elm. Mostly fruit producing plants that will provide valuable winter food for many species of birds. The planting in December was organized under the Trees for Cities scheme.

The Great Oak at Highbury is over 300 years old and was possibly planted during the reign of William and Mary or Queen Anne. This three-limbed veteran lost one of its limbs around 10 years ago and has since received the scrutiny of tree officers and park workers to ensure prolonged life. The tree still has a fine form and balance with two existing limbs in healthy condition and we would like to conserve the tree in this state.

Oaks are a great asset to the biodiversity of the park and support a wealth of plants, invertebrates and bird life, and provide an important landscape feature.

Two hedgerows have been planted recently, one on the line of an old hedge shown on an early OS map (1904) and one incorporating the Great Oak.

Further work will create a rustic hedge around the oak together with

the development of scrub to reduce footfall near the tree.

These hedges further add to the wooded fabric of the area, thereby further increasing the park's biodiversity. All work is being carried out by Rangers and volunteers in consultation with Highbury Park Friends and Highbury Park Working Party.

For more information contact Kings Heath Ranger Hub in Kings Heath Park.

Alf Dimmock, Senior Park Ranger.



*New plantings by the ancient oak tree*

## The Chamberlain Highbury Trust Trustees designate



**Les Sparks, OBE,  
Chair**

Les was Director of Planning & Architecture for Birmingham City Council from 1991

to 1999. From 1999 to 2001 he chaired the Expert Panel for Land & Buildings at the Heritage Lottery Fund (HLF) and from 2001 to 2008 he was a Commissioner of English Heritage. Since 2010 he has been chair of the West Midlands Committee of the HLF, a position he will vacate in March 2016, and chair of the Ironbridge Gorge World Heritage Site Steering Group. During an 11-year term as Director of Environmental Services at Bath City Council, he founded the Historic Towns Forum. He was awarded the OBE in 1997. He was born in Hall Green and now lives in Selly Park.



**Paul Richards,  
Vice Chair**

Paul was Chief Executive of the West Midlands Development Agency from 1991

until 2000 and from 2000 to 2013 was Deputy Vice Chancellor and Deputy Chief Executive of Staffordshire University. He was a member of the West Midlands Regional Council of the CBI, and from 2011 to 2015 he chaired the Staffordshire University Academies

Trust. He is currently a Trustee of the Lichfield Garrick Theatre and chairs the Interim Executive Board of Lindsworth School. He is a member of the Institute of Directors and the Lunar Society, and a Fellow of the RSA. Paul lives in Moseley.

### **Trustees (designate)**

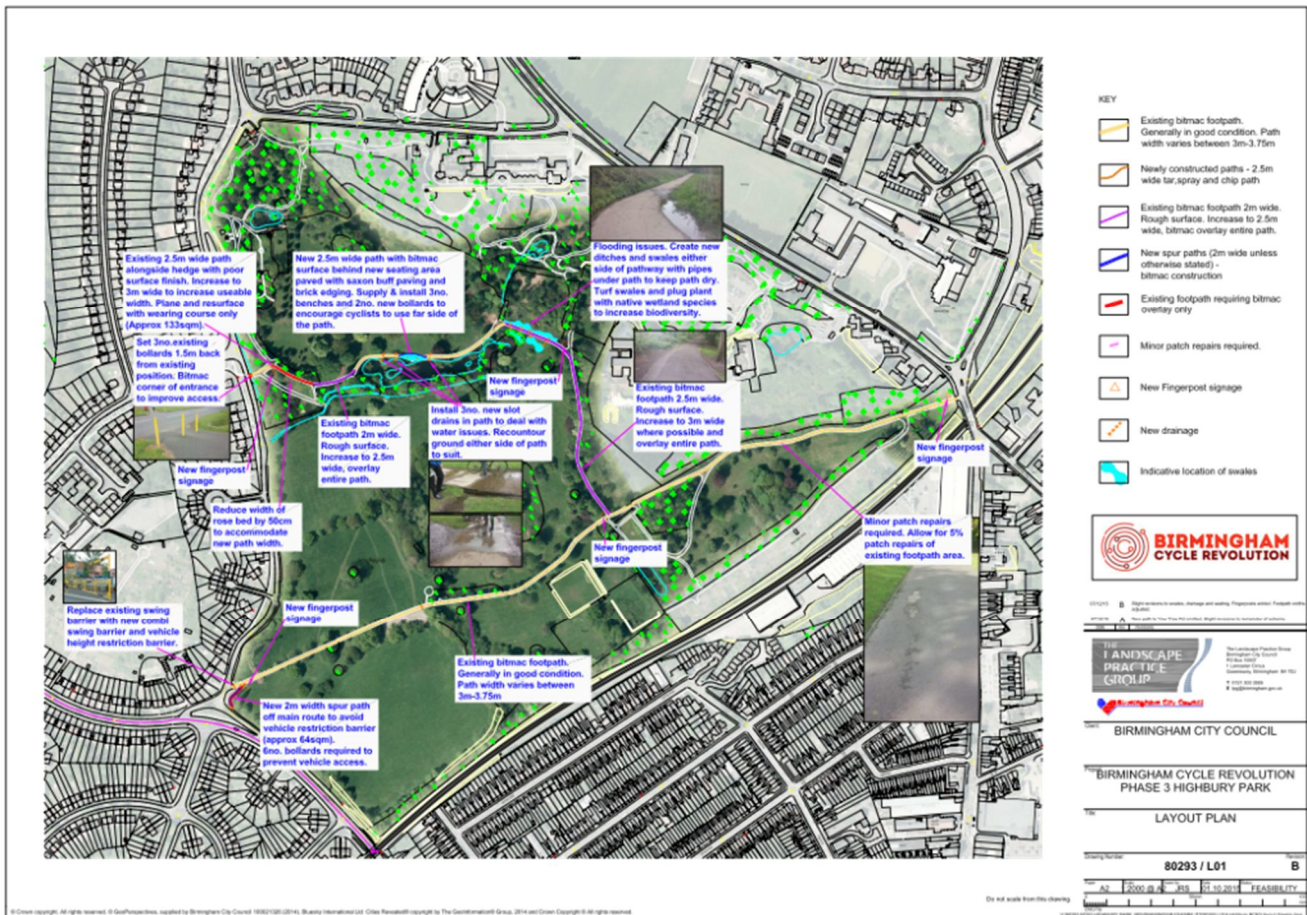
Phillada Ballard, Sarah Siena Edwards, Ian Grosvener, Alison Millward, Jo Smith, Mike Williams.

In addition the board of trustees will have two members nominated by Birmingham City Council, representing the local ward and the Council's Trusts & Charities Committee.

The Trust is starting local consultations in the New Year and we will keep you up to date with progress and opportunities to contribute

## **Highbury Cycle Path BCR3 Consultation**

The Council is consulting about changes to the cycling paths in Highbury Park (see map on the next page). Full details are available on the Council website. Whilst some ideas appear helpful, one of the proposals is to widen the existing cycle paths. Some park users have already expressed a view and the majority seems to feel this is unnecessary and might damage tree roots. Comments to the Council by Monday 18<sup>th</sup> January please.



## Cycle path consultation plan

### Hacked off!

A HPF committee member was enjoying a walk above the beech trees in the park in November when she discovered a member of the public pulling up brambles. Asking him why he was doing this it was clear that he thought they were damaging the trees and needed to be removed. The Parks Department has spoken with this individual to put him right, but please remain vigilant. If you see anyone you suspect to be undertaking unauthorized cutting back of trees or vegetation please inform the Parks Department (Tel. 0121 675 9613) immediately so we can try to intervene early and stop things getting out of hand.

## Ranger Woodland Work Programme

During 2016 there will be a weekly themed woodland event organized through the Ranger Service Active Parks Wellbeing Programme.

Beginning January 13<sup>th</sup> the events will include practical workdays, management planning, tree identification, rambles, discussion and much more. The first sessions will be practical, using a variety of tools for which instruction will be given and will take place in Highbury Park, meeting at the car park 10.30am.

Further information from Kings Heath Ranger Hub. Tel. 0121 675 9613